

# PLC Optical Splitter

## Planar Lightwave Circuit Splitter Rack Mountable

Infinique's PLC Optical Splitters are designed with precise alignment of optical fibers to provide equal optical power from input ports to multiple output ports. With a wide operating wavelength range, high optical performance and very high reliability these are suitable for use in PON networks to realize perfect optical signal power splitting.

Bend-insensitive, G.657A1 LSOH singlemode fiber is used to provide low bending loss and protection against accidental tight bends down to 7.5 mm radius.

To confirm high performance and reliability, our PLC Optical Splitters are tested and certified as per Telcordia standards GR-1209, Generic Requirements for Fiber Optic Branching Components and GR-1221, Generic Reliability Assurance Requirement for Passive Optical Components.

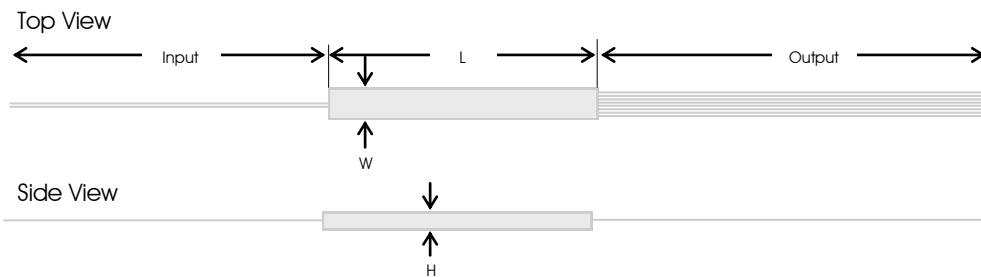
All our PLC Optical Splitters are factory tested and a detailed test report is packed along with the PLC splitter.

Infinique's PLC Splitters are available in different configurations, with SC-APC and LC-APC Adapters. The fan-out pigtails are numbered for easy identification. These rack mountable versions of PLC Splitters are rugged and easy to install and are suitable for both indoor and outdoor applications.

### Features and Benefits

- Certification**  
 Certified as per Telcordia GR-1209 and GR-1221 Standards
- Reliable Performance**  
 Low insertion loss, Factory tested and a detailed test report accompanies each PLC Splitter
- Rugged Construction**  
 Rack Mountable rugged construction suitable for both indoor and outdoor applications
- Easy Identification**  
 Fan-out pigtails are numbered for easy identification
- Speedy Installation**  
 Plug Simple fiber management and Ripcords for easy stripping

### PLC SPLITTER CONSTRUCTION



**In brief:**  
 PLC Optical Splitter 2x32  
 G.657A1 LSOH Cable  
 SC APC Singlemode  
 Port Numbers for Identification  
 Numbered Fan-out Pigtails  
 19" Rack Mountable  
 Enclosed Construction  
 Numbered Fan-out Pigtails

Rack Mountable Splitter Chassis



# PLC Optical Splitter

## Planar Lightwave Circuit Splitter Rack Mountable

### OPTICAL SPECIFICATIONS

Splitter Type	1x8	1x16	1x32	1x64	2x2	2x8	2x16	2x32	2x64
Insertion Loss (dB)	7.6 / 7.3	10.8 / 10.5	14.1 / 13.8	17.3 / 16.8	4.7 / 4.4	7.8 / 7.6	11.3 / 10.8	14.8 / 14.3	18.3 / 17.8
Uniformity (dB)	0.6 / 0.5	0.8 / 0.6	1.0 / 0.7	1.2 / 1.0	1.1 / 0.9	1.2 / 1.0	1.2 / 1.0	1.8 / 1.5	1.8 / 1.5
Polarization Dependent Loss (dB)	0.2 / 0.15	0.2 / 0.2	0.25 / 0.2	0.25 / 0.2	0.25 / 0.2	0.25 / 0.2	0.25 / 0.2	0.3 / 0.25	0.3 / 0.25
Operating Wavelength (nm)	1260-1650								
Return Loss (dB)	≥55								
Wavelength Dependent Loss (dB)	0.3								
Temperature Dependent Loss (dB)	0.5								
Return Loss Directivity (dB)	55								
PLC Splitter Dimensions (L x W x H) mm	80 x 20 x 6								
Fiber Type	ITU G.657A1 Singlemode Fiber								
Fiber Pigtail	Diameter - 2.0mm, Length - 1 meter or Custom Length								
Connector Type	SC-APC, LC-APC								
Connection Insertion Loss (Mated Pair)	≤0.3								
Connector Material	Zirconia								
Splitter Material	Stainless Steel								
Operating Temperature (°C)	-40 to +85								
Storage Temperature (°C)	-40 to +85								

### STANDARDS

Telcordia	GR-1209, Generic Requirements for Fiber Optic Branching Components
Telcordia	GR-1221, Generic Reliability Assurance Requirement for Passive Optical Components

### TEST REPORT FORMAT

Insertion Loss (wavelength at 1310nm and 1550) (@25°C)
Uniformity (@25°C)
PDL (@25°C)
Dimension of the protective case and length of pigtails
Visual inspection (Pass or Fail)
Component packing dimensions (Pass or Fail)

### PACKING

The Splitter is packed securely and the fibers are arranged with a minimum bend radius of 15mm. The packaging protects the Splitter from any drops, and shipping cartons are of sufficient strength and durability to protect the contents from handling during storage and shipping.

### ORDERING INFORMATION

Part Number	Description	Connector
IFPLC-SM-108-ASCR	Infinique 1x8 PLC Optical Splitter, G.657A1 Singlemode, SC-APC Connectors, Rack Mountable	Singlemode SC-APC
IFPLC-SM-116-ASCR	Infinique 1x16 PLC Optical Splitter, G.657A1 Singlemode, SC-APC Connectors, Rack Mountable	Singlemode SC-APC
IFPLC-SM-132-ASCR	Infinique 1x32 PLC Optical Splitter, G.657A1 Singlemode, SC-APC Connectors, Rack Mountable	Singlemode SC-APC
IFPLC-SM-164-ASCR	Infinique 1x64 PLC Optical Splitter, G.657A1 Singlemode, SC-APC Connectors, Rack Mountable	Singlemode SC-APC
IFPLC-SM-208-ASCR	Infinique 2x8 PLC Optical Splitter, G.657A1 Singlemode, SC-APC Connectors, Rack Mountable	Singlemode SC-APC
IFPLC-SM-216-ASCR	Infinique 2x16 PLC Optical Splitter, G.657A1 Singlemode, SC-APC Connectors, Rack Mountable	Singlemode SC-APC
IFPLC-SM-232-ASCR	Infinique 2x32 PLC Optical Splitter, G.657A1 Singlemode, SC-APC Connectors, Rack Mountable	Singlemode SC-APC
IFPLC-SM-264-ASCR	Infinique 2x64 PLC Optical Splitter, G.657A1 Singlemode, SC-APC Connectors, Rack Mountable	Singlemode SC-APC
IFPLC-SM-108-ALCR	Infinique 1x8 PLC Optical Splitter, G.657A1 Singlemode, LC-APC Connectors, Rack Mountable	Singlemode LC-APC
IFPLC-SM-116-ALCR	Infinique 1x16 PLC Optical Splitter, G.657A1 Singlemode, LC-APC Connectors, Rack Mountable	Singlemode LC-APC
IFPLC-SM-132-ALCR	Infinique 1x32 PLC Optical Splitter, G.657A1 Singlemode, LC-APC Connectors, Rack Mountable	Singlemode LC-APC
IFPLC-SM-164-ALCR	Infinique 1x64 PLC Optical Splitter, G.657A1 Singlemode, LC-APC Connectors, Rack Mountable	Singlemode LC-APC
IFPLC-SM-202-ALCR	Infinique 2x2 PLC Optical Splitter, G.657A1 Singlemode, LC-APC Connectors, Rack Mountable	Singlemode LC-APC
IFPLC-SM-208-ALCR	Infinique 2x8 PLC Optical Splitter, G.657A1 Singlemode, LC-APC Connectors, Rack Mountable	Singlemode LC-APC
IFPLC-SM-216-ALCR	Infinique 2x16 PLC Optical Splitter, G.657A1 Singlemode, LC-APC Connectors, Rack Mountable	Singlemode LC-APC
IFPLC-SM-232-ALCR	Infinique 2x32 PLC Optical Splitter, G.657A1 Singlemode, LC-APC Connectors, Rack Mountable	Singlemode LC-APC
IFPLC-SM-264-ALCR	Infinique 2x64 PLC Optical Splitter, G.657A1 Singlemode, LC-APC Connectors, Rack Mountable	Singlemode LC-APC



Infonique, a Canadian company is a manufacturer of high performing end-to-end solutions in copper, fiber and video surveillance systems. For more information visit our website at [www.infinique.com](http://www.infinique.com) or email us at [sales@infinique.com](mailto:sales@infinique.com).