

# PLC Optical Splitter

## Planar Lightwave Circuit Splitter Rack Mountable

Infinique's PLC Optical Splitters are designed with precise alignment of optical fibers to provide equal optical power from input ports to multiple output ports. With a wide operating wavelength range, high optical performance and very high reliability these are suitable for use in PON networks to realize perfect optical signal power splitting.

Bend-insensitive, G.657A1 LSOH singlemode fiber is used to provide low bending loss and protection against accidental tight bends down to 7.5 mm radius.

To confirm high performance and reliability, our PLC Optical Splitters are tested and certified as per Telcordia standards GR-1209, Generic Requirements for Fiber Optic Branching Components and GR-1221, Generic Reliability Assurance Requirement for Passive Optical Components.

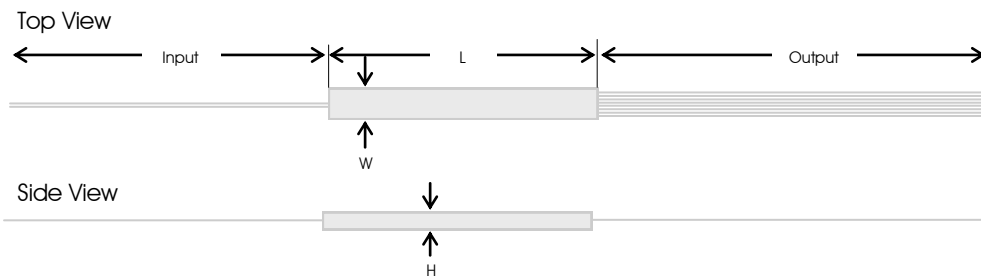
All our PLC Optical Splitters are factory tested and a detailed test report is packed along with the PLC splitter.

Infinique's PLC Splitters are available in different configurations, with SC-APC and LC-APC Adapters. The fan-out pigtails are numbered for easy identification. These rack mountable versions of PLC Splitters are rugged and easy to install and are suitable for both indoor and outdoor applications.

### Features and Benefits

- Certification**  
 Certified as per Telcordia GR-1209 and GR-1221 Standards
- Reliable Performance**  
 Low insertion loss, Factory tested and a detailed test report accompanies each PLC Splitter
- Rugged Construction**  
 Rack Mountable rugged construction suitable for both indoor and outdoor applications
- Easy Identification**  
 Fan-out pigtails are numbered for easy identification
- Speedy Installation**  
 Plug Simple fiber management and Ripcords for easy stripping

### PLC SPLITTER CONSTRUCTION



Rack Mountable Splitter Chassis



#### In brief:

- PLC Optical Splitter 2x32
- G.657A1 LSOH Cable
- SC APC Singlemode
- Port Numbers for Identification
- Numbered Fan-out Pigtails
- 19" Rack Mountable
- Enclosed Construction
- Numbered Fan-out Pigtails



# PLC Optical Splitter

## Planar Lightwave Circuit Splitter Rack Mountable

### OPTICAL SPECIFICATIONS

|  |   |             |             |             |            |            |             |             |             |
|--|---|-------------|-------------|-------------|------------|------------|-------------|-------------|-------------|
| Splitter Type                          | 1x8   | 1x16        | 1x32        | 1x64        | 2x2        | 2x8        | 2x16        | 2x32        | 2x64        |
| Insertion Loss (dB)                    | 7.6 / 7.3   | 10.8 / 10.5 | 14.1 / 13.8 | 17.3 / 16.8 | 4.7 / 4.4  | 7.8 / 7.6  | 11.3 / 10.8 | 14.8 / 14.3 | 18.3 / 17.8 |
| Uniformity (dB)                        | 0.6 / 0.5   | 0.8 / 0.6   | 1.0 / 0.7   | 1.2 / 1.0   | 1.1 / 0.9  | 1.2 / 1.0  | 1.2 / 1.0   | 1.8 / 1.5   | 1.8 / 1.5   |
| Polarization Dependent Loss (dB)       | 0.2 / 0.15  | 0.2 / 0.2   | 0.25 / 0.2  | 0.25 / 0.2  | 0.25 / 0.2 | 0.25 / 0.2 | 0.25 / 0.2  | 0.3 / 0.25  | 0.3 / 0.25  |
| Operating Wavelength (nm)              | 1260-1650   |             |             |             |            |            |             |             |             |
| Return Loss (dB)                       | ≥55   |             |             |             |            |            |             |             |             |
| Wavelength Dependent Loss (dB)         | 0.3   |             |             |             |            |            |             |             |             |
| Temperature Dependent Loss (dB)        | 0.5   |             |             |             |            |            |             |             |             |
| Return Loss Directivity (dB)           | 55  |             |             |             |            |            |             |             |             |
| PLC Splitter Dimensions (L x W x H) mm | 80 x 20 x 6   |             |             |             |            |            |             |             |             |
| Fiber Type                             | ITU G.657A1 Singlemode Fiber                        |             |             |             |            |            |             |             |             |
| Fiber Pigtail                          | Diameter - 2.0mm, Length - 1 meter or Custom Length |             |             |             |            |            |             |             |             |
| Connector Type                         | SC-APC, LC-APC                                      |             |             |             |            |            |             |             |             |
| Connection Insertion Loss (Mated Pair) | ≤0.3  |             |             |             |            |            |             |             |             |
| Connector Material                     | Zirconia  |             |             |             |            |            |             |             |             |
| Splitter Material                      | Stainless Steel                                     |             |             |             |            |            |             |             |             |
| Operating Temperature (°C)             | -40 to +85  |             |             |             |            |            |             |             |             |
| Storage Temperature (°C)               | -40 to +85  |             |             |             |            |            |             |             |             |

### STANDARDS

|           |   |
|-----------|---|
| Telcordia | GR-1209, Generic Requirements for Fiber Optic Branching Components                |
| Telcordia | GR-1221, Generic Reliability Assurance Requirement for Passive Optical Components |

### TEST REPORT FORMAT

|   |
|---|
| Insertion Loss (wavelength at 1310nm and 1550) (@25°C)  |
| Uniformity (@25°C)                                      |
| PDL (@25°C)   |
| Dimension of the protective case and length of pigtails |
| Visual inspection (Pass or Fail)                        |
| Component packing dimensions (Pass or Fail)             |

### PACKING

The Splitter is packed securely and the fibers are arranged with a minimum bend radius of 15mm. The packaging protects the Splitter from any drops, and shipping cartons are of sufficient strength and durability to protect the contents from handling during storage and shipping.

### ORDERING INFORMATION

| Part Number       | Description  | Connector         |
|-------------------|--|-------------------|
| IFPLC-SM-108-ASCR | Infinique 1x8 PLC Optical Splitter, G.657A1 Singlemode, SC-APC Connectors, Rack Mountable  | Singlemode SC-APC |
| IFPLC-SM-116-ASCR | Infinique 1x16 PLC Optical Splitter, G.657A1 Singlemode, SC-APC Connectors, Rack Mountable | Singlemode SC-APC |
| IFPLC-SM-132-ASCR | Infinique 1x32 PLC Optical Splitter, G.657A1 Singlemode, SC-APC Connectors, Rack Mountable | Singlemode SC-APC |
| IFPLC-SM-164-ASCR | Infinique 1x64 PLC Optical Splitter, G.657A1 Singlemode, SC-APC Connectors, Rack Mountable | Singlemode SC-APC |
| IFPLC-SM-208-ASCR | Infinique 2x8 PLC Optical Splitter, G.657A1 Singlemode, SC-APC Connectors, Rack Mountable  | Singlemode SC-APC |
| IFPLC-SM-216-ASCR | Infinique 2x16 PLC Optical Splitter, G.657A1 Singlemode, SC-APC Connectors, Rack Mountable | Singlemode SC-APC |
| IFPLC-SM-232-ASCR | Infinique 2x32 PLC Optical Splitter, G.657A1 Singlemode, SC-APC Connectors, Rack Mountable | Singlemode SC-APC |
| IFPLC-SM-264-ASCR | Infinique 2x64 PLC Optical Splitter, G.657A1 Singlemode, SC-APC Connectors, Rack Mountable | Singlemode SC-APC |
| IFPLC-SM-108-ALCR | Infinique 1x8 PLC Optical Splitter, G.657A1 Singlemode, LC-APC Connectors, Rack Mountable  | Singlemode LC-APC |
| IFPLC-SM-116-ALCR | Infinique 1x16 PLC Optical Splitter, G.657A1 Singlemode, LC-APC Connectors, Rack Mountable | Singlemode LC-APC |
| IFPLC-SM-132-ALCR | Infinique 1x32 PLC Optical Splitter, G.657A1 Singlemode, LC-APC Connectors, Rack Mountable | Singlemode LC-APC |
| IFPLC-SM-164-ALCR | Infinique 1x64 PLC Optical Splitter, G.657A1 Singlemode, LC-APC Connectors, Rack Mountable | Singlemode LC-APC |
| IFPLC-SM-202-ALCR | Infinique 2x2 PLC Optical Splitter, G.657A1 Singlemode, LC-APC Connectors, Rack Mountable  | Singlemode LC-APC |
| IFPLC-SM-208-ALCR | Infinique 2x8 PLC Optical Splitter, G.657A1 Singlemode, LC-APC Connectors, Rack Mountable  | Singlemode LC-APC |
| IFPLC-SM-216-ALCR | Infinique 2x16 PLC Optical Splitter, G.657A1 Singlemode, LC-APC Connectors, Rack Mountable | Singlemode LC-APC |
| IFPLC-SM-232-ALCR | Infinique 2x32 PLC Optical Splitter, G.657A1 Singlemode, LC-APC Connectors, Rack Mountable | Singlemode LC-APC |
| IFPLC-SM-264-ALCR | Infinique 2x64 PLC Optical Splitter, G.657A1 Singlemode, LC-APC Connectors, Rack Mountable | Singlemode LC-APC |



Infonique, a Canadian company is a manufacturer of high performing end-to-end solutions in copper, fiber and video surveillance systems. For more information visit our website at [www.infinique.com](http://www.infinique.com) or email us at [sales@infinique.com](mailto:sales@infinique.com).